

# TLC HISTORICAL EXHIBIT, 2010-2011

## This is the beginning...

1

**WELCOME**  
to the Tahawus  
Center. This is the  
beginning of the  
transformation of a  
historic building  
into a vibrant new  
hub right here in  
Au Sable Forks.

We hope the TLC  
effort will stimulate  
the economic  
engine using the  
creative drive of  
arts and culture  
to combine with  
entrepreneurism.



The Masons building as it looked in May 2007 and in March 2009.

Appleby Foundation  
acquired the building in July  
2009.

Appleby Foundation, Inc,  
aka Rebecca Kelly Ballet,  
is the 501c3 not-for-profit,  
performing arts organization  
founded in 1979.

Craig Brashear and  
Rebecca Kelly have been  
performing artists for 35  
years.



RKB's work takes place in  
many norther Adirondacks  
communities as well as in  
New York City.

Focusing on the creation  
and performance of original  
ballets by Kelly, and the  
development of creative  
outlets for youth in outreach  
programs, RKB kindles the  
imagination and strengthen  
communities through  
participation in the arts.

# The Tahawus Lodge Center, Main Street, Au Sable Forks, the Town of Jay, New York



1911



1960



2007

## BACKGROUND

The name *Ta-ha-wus* was said to be a Native American word meaning "Cloudsplitter." It is also thought that Europeans invented this name for the Adirondack's highest peak, Mt. Marcy.

Tahawus Lodge 790 was chartered by the Masons on October 11, 1884. Constructed in 1911, it was one of the few buildings to survive the great fire in 1925. Plans were drawn by architect C. F. Kingsley of Keeseville, a former resident of Au Sable Forks.

The building was designed to hold a ground level store, a 2nd floor banquet and reception space; the 3rd floor was the lodge room. Over the many years, the building has variously housed a laundromat, a newspaper, and the Post Office.



2009



2011

## WORK BEGINS

Asbestos remediation was completed in fall of 2009.

Appleby contracted with **Premise\_s Architects** for design. Meetings continued with Main St Revitalization group, the Town Supervisor, Town of Jay, and others

Volunteers clear debris during summer of 2010.



## Phase One

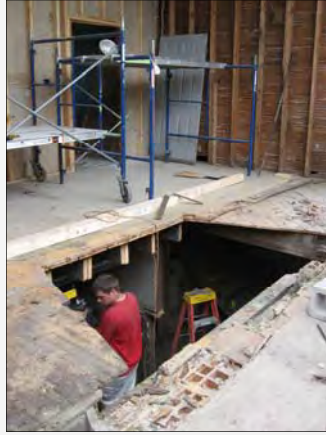
**Construction** is made possible in part by a Main St. Municipal Matching grant from Au Sable Forks, the Town of Jay, administered by HAPEC, a NYSCA Planning and Design grant, and private contributions from people like you!

**THANK YOU!**



**HIGH PEAKS BUILDERS** begin renovation in August 2010 to create new store front, and make repairs to the basement and stairs.

**COLD SPRING GRANITE** provide stone entryways.



## FOR LEASE

Ground fl. 1500 sq.ft  
Basement 1200 sq. ft

**212-431-8489**

Tahawus@verizon.net

Located at one of the most visible and advantageous sites in the hamlet.

**The Main Street Ground Floor and Basement** are now available as prime retail spaces.

Income from these spaces will support the cultural activities of the center on the upper floors.

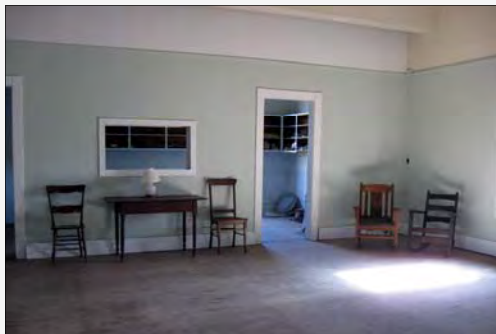


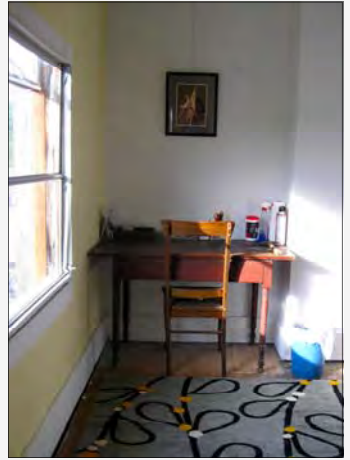


**Multi-use Dance Studio 25' x 45'** with bathroom & changing rooms



**Multi-use Gallery Space 22' x 60'** with kitchen/ bathroom





**Multi-use Dance Studio 25' x 45', 2011**



**Multi-use Gallery Space 22' x 60', 2011**



# The Tahawus Center's WINDOWS GALLERY

WINDOWS GALLERY is where the art world and the village community engage with innovative projects; a flexible, entertaining, gathering place, committed to serving the community, while opening a window to the best talent and culture of the region - and beyond.

## 2011

Jan 11-Mar 1 **Mark Hobson** (ASF), *The Forks: There's no Place Like Home*, and Apr 22 -June 30, *ART convey / transport / reflect*"

July 22-Aug 31 **Arto Monaco**, (Upper Jay), *Art and Toys*

Nov-Dec 31 **Todd Bissonette**, (Lake Placid) *Captured Moments*  
photography of Rebecca Kelly Ballet in performance

## 2012

June 21-22 **Rockwell Kent** *130th Birthday Exhibit and Sale*  
from the collection of Ralf Nemec

July 14-Aug 31 *Hardscrabble / Tough Au Sable Forks / Detroit*  
curated by **William Dilworth** (Jay)

Sept 21-Oct 12 ***Mohawk of the Adirondacks***, curated by Margaret Horn  
(Au Sable Forks); included Elementary School Outreach Beading  
workshop, and visits from area schools

Dec 15-Jan 5 ***Trains are Coming***, two galleries are transformed into a  
wonderland of G-model trains, by Lou Scavo (ASF) and Carl Kokes (Peru).

## 2013

February—*Through the Looking Glass*: a changing exhibit of scenes  
and displays seen through the Main Street Windows of TLC.

Artists included set designer **Tom Kamm**, and painter **Donna Marxer**

Sept 6-Oct 6 **Jeri Wright**, *Through the Years*, (Wilmington) and  
**Grand Re-opening of the Gallery on the 2nd Floor**

## 2014

July—**The Museum Pop Ups**, curated by Karla Oehler

August—Hans Laverge's Japanese Scrolls, Nadine McLoughlin "Double  
Visions" a Climate Symposium, and

Fall projects— North Country Ballet Ensemble, Plattsburgh/ Lake Placid



